



Polaris RZR Style UTV 4x4

Kids Ride on Car

Installation and Operation Instructions



Please read this instruction manual carefully. It is important to read and follow all the steps during assembly to ensure proper operation and safety of the child. Please keep this manual for future reference.




**Scan this QR Code
to view the
Assembly Video**

SPECIFICATIONS:

Battery Type:	12V10AH	Avg. Speed:	2 – 5 MPH
Age Range:	3 – 8 Years	Charging time:	8-12 hrs – Minimum 1 Charge per month
Max. Weight:	80 lbs	Avg. Use Time:	48-90 Minutes (depending on use)
Product Size:	53”L x 37”W x 36”H	Remote Battery:	2 - AAA (not included)

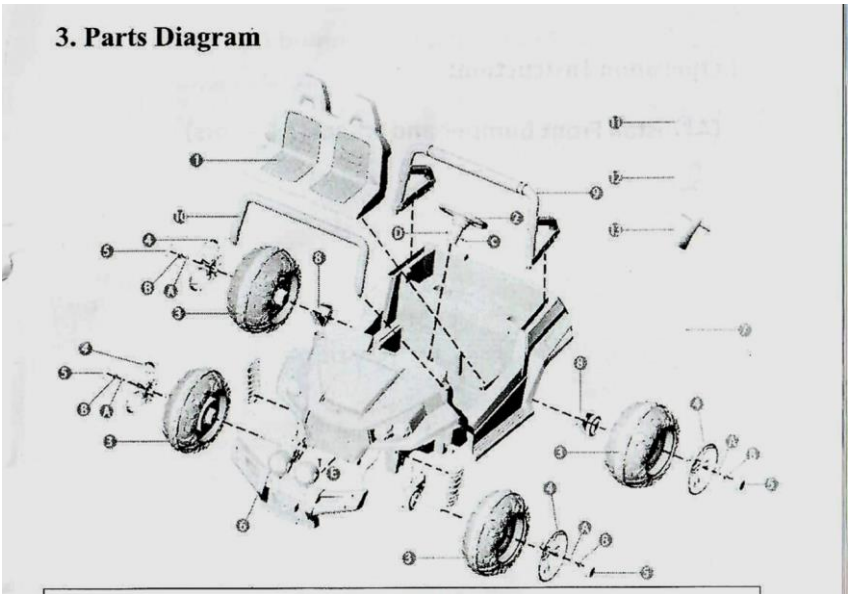
IMPORTANT!

<ul style="list-style-type: none"> Assembly of car and charging of battery is only to be done by an adult.  	<ul style="list-style-type: none"> WARNING!! NOT TO BE USED ON STREETS or IN TRAFFIC.
<ul style="list-style-type: none"> Never modify the electric circuit system or tamper with electric system. This can cause permanent damage. 	<ul style="list-style-type: none"> Please check the product regularly for any loose parts or wires to ensure proper operation.
<ul style="list-style-type: none"> Adult supervision is recommended during operation by child to avoid injury. Safety equipment is recommended. 	<ul style="list-style-type: none"> Please make sure that the child uses caution to avoid falls and collisions, which could cause injury to the child or third party.
<ul style="list-style-type: none"> Do not pick up vehicle by steering wheel. 	<ul style="list-style-type: none"> Do not pick up battery by wires or charger.
<ul style="list-style-type: none"> Keep all plastic bags out of the reach of young children. 	<ul style="list-style-type: none"> Not recommended for children under the age of 2 yrs. due to small parts that could cause a choking hazard.
<ul style="list-style-type: none"> Battery must be charged for a minimum of 8-12 hours prior to first use of the car to avoid damage to the battery. Power switch must be in off position when charging. 	<ul style="list-style-type: none"> Battery charger should be examined for damage prior to each use. It is important to inspect the cord and both ends for damage. If damage is found, DO NOT USE THE CHARGER! Contact us for replacement charger.
<ul style="list-style-type: none"> Please retain instruction manual for future reference. 	<ul style="list-style-type: none"> Please retain packaging in the event it is necessary to return.

If the charger is plugged into the charging port, the car will not power up regardless if the charger is plugged into the wall outlet or not.

PARTS LIST

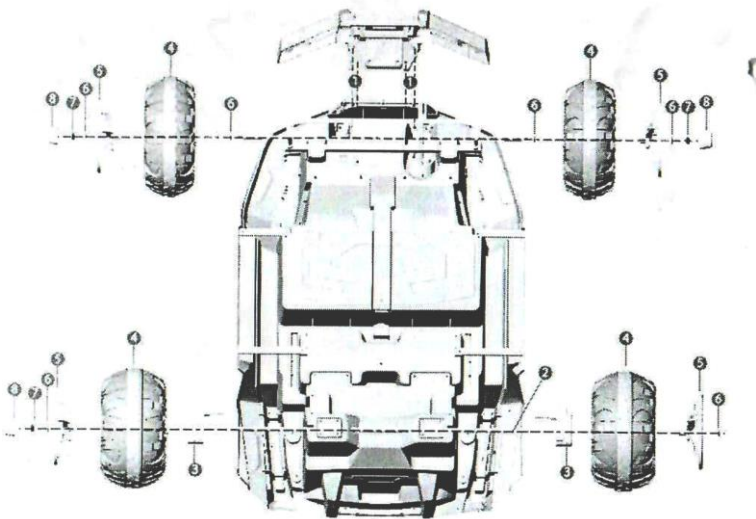
#	Part Name	Qty	#	Part Name	Qty
1	Seat	1	10	Front Roll Bar	1
2	Steering Wheel	1	11	Remote Control	1
3	Wheels	4	12	Charger	1
4	Wheel Rim	4	13	Spanner Wrench	1
5	Wheel Hubcap	4	A	Wheel Bushings	4-6
6	Front Bumper	1	B	Lug Nut (found on axles)	4-5
7	Rear Axle	1	C	Steering Bolt (found on steering wheel)	1
8	Rear Drive Motor	1	D	Steering Wheel Nut (found on steering wheel)	1
9	Back Roll bar	1	E	Body Screws	



[All assembly videos can be found on YouTube under SPORTrax](#)

Installation of Rear Axle Assembly:

Turn the car upside down on a flat surface. Locate the rear axle shaft. Remove the nut and washer from both sides of the axle shaft. Slide the rear axle through the car body at the rear of the car, making sure there is an equal length on each side of the car. It may be necessary to press down the 2 spring pockets to get the axle pushed through. Slide the right and left rear motors onto the axle with the motor facing the car body. There is a hole in the body for the motor to slide into. Slide rear tires (2 bigger tires of the set) onto axle. Make sure that the hub adaptor is aligned with the motor. Slide chrome wheel cover onto the axle. Make sure to align the hex hub on the back side of the wheel cover with the center of the wheel. Install washer & nut onto each side of the axle. Tighten with the included spanner wrenches provided. NOTE: 2 spanner wrenches are included so you can hold 1 side still as you are tightening the opposite side.



Installation of the front wheels & front bumper:

Locate front bumper & secure to bottom of vehicle, at the front, with 6 screws. 4 of the 6 screws are installed from the bottom and the remaining 2 screws attach the bumper from the front of the vehicle. Remove lug nut and washer from each front axle. Slide front wheels (smaller wheels of set) onto each front axle. Make sure to align the hex hub on the back side of the wheel cover with the center of the wheel. Install washer & nut onto each side of the axle. Tighten with the included spanner wrenches provided.

Do not over tighten tires because this could cause premature motor failure.

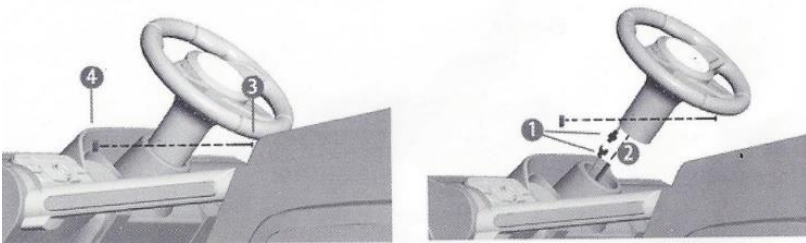
Installation of seat:

Turn vehicle right side up & locate the seat. Start by pressing the seat adjustment button located just below seat area. While holding the button down, slide the seat into place, ensuring the seat is aligning with the grooves in the body of the car. Once the seat is positioned near the back of the seat area, it is necessary to make sure the seat pegs located on the back of the seats match up to the holes in the body of the car. Release seat adjusting button & make sure there is no movement in the seat. To adjust the seat, press the button & slide the seat forward to desired position.

Installation of the steering wheel:

Locate the steering wheel & remove the nut and bolt that is located through the center of the steering wheel column. Connect the plug from the steering wheel to the corresponding plug coming from the steering column of the car. After making the connection, slide excess wiring into the dash while sliding the steering wheel onto the steering shaft. Align the hole in the steering wheel with the hole in the steering shaft. Re-insert bolt through the steering wheel and thread the nut onto the bolt. It is important to tighten the nut until it is snug. **DO NOT OVER TIGHTEN** as damage to the steering wheel may occur. **Steering wheel bolt MUST be installed** to avoid damage to the wiring in the steering column if the steering wheel gets pulled off.

***Steering wheel is NOT a carrying point for the vehicle. This will cause damage to the steering wheel & wiring.**



Checking Electrical Connections:

Turn the locking button on the hood to unlock position & open hood. Check that all connections are properly made & ensure that there are no loose connections. This should be done regularly by an adult. There will be one loose yellow wire which is the antenna to the FM radio.

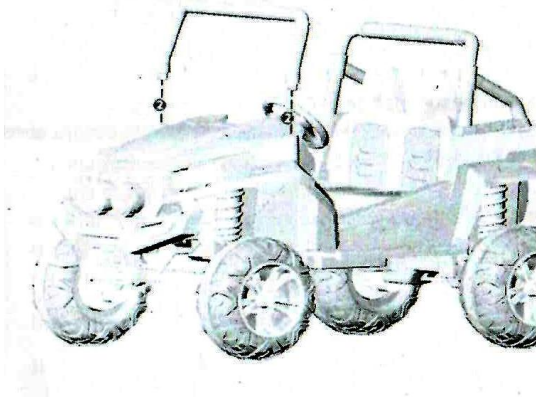
Installation of Back Roll Bar:

Align back roll bar (bigger of the 2) with the grooves located in the rear area of the car. Push down into place until you hear a clicking sound. Gently lift on the bar to ensure proper installation.

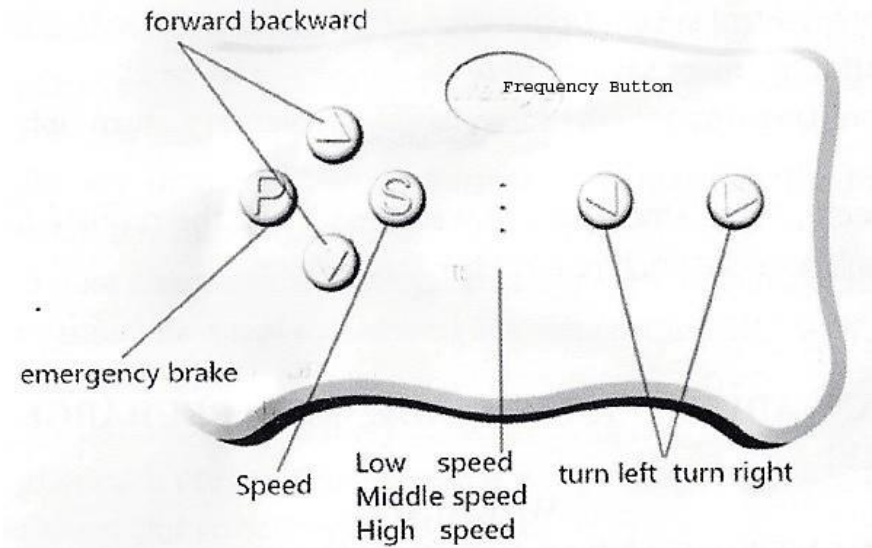


Installation of Front Windshield Roll Bar:

Align roll bar with the holes in the body near the dash of the car. Push down into place until you hear a clicking sound. Gently lift on the bar to ensure proper installation. Note: the smooth side of the bar will be facing towards the front of the vehicle.



Remote Control Function



Remote Control Instructions: For the first time use of remote control or after replacing the battery, you need to sync the remote to the car.

- Install the remote-control batteries (AA not included).
- Hold the frequency button (Large button at top of remote) 2-4 seconds. The Low speed LED light should be flashing.
- Turn on the car by pressing the Power button. The Low speed LED light should still be flashing and then turn to a steady light if synced correctly.
- If the syncing failed (Low speed LED light still flashing), remove the batteries and repeat steps a – c.
- Remote Control indicator light will go off and into power saving mode if not used for more than 10 seconds.
- Button Descriptions:

▲ Forward ▼ Backward ► Turn Right ◀ Turn Left

S = Speed - Push button P = Emergency brake, press it once to stop the motion of the car. Pressing it again will release the emergency brake, restoring the functions of the car.

There are 3 speed selections to choose.



Charging the battery:

The charging port is located on the right side of the dashboard under the power button. Plug the charger into the charging port first, then plug the charger into a wall outlet.

Please Note: As a safety precaution and to avoid damage to the charger, the car will not power up while charger port is plugged into the car.

BATTERY MUST BE CHARGED FOR A MINIMUM OF 8 HOURS BEFORE INITIAL USE TO AVOID DAMAGE TO THE BATTERY. ONLY AN ADULT SHOULD CHARGE AND RECHARGE THE BATTERY!

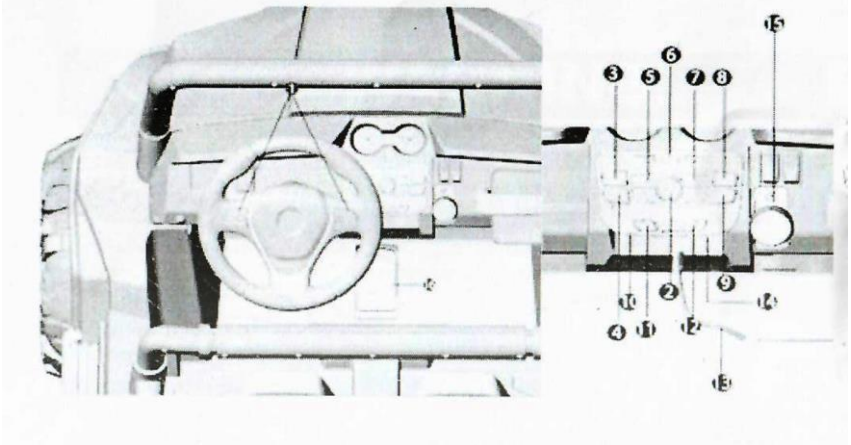
BATTERY REPLACEMENT AND DISPOSAL:

The battery will eventually lose the ability to hold a charge. Depending on the amount of use, and varying conditions, the battery should operate for one to three years. Follow these steps to replace and/or dispose of the battery:

- Turn the locking button on the hood to unlock position & open hood.
- Disconnect the battery connectors
- Remove the metal battery bracket
- Carefully lift the battery - you may want to wear protective gloves before removal - **Do Not** lift the battery by its connectors or cables
- Place the dead battery in a plastic bag
- Replace the battery and reconnect the connectors
- Replace the metal battery bracket
- Close the hood and turn the locking button on the hood to the lock position.

Main Functions

G: Function introduction



1. Music Button: Press these buttons to start the onboard music
2. Power Button: Turn vehicle on and off
3. Back Button: press to go back to previous song, hold button to increase volume
4. Forward Button: Press to go to next song, hold button to decrease volume
5. Pause Button: Press button to pause music, press button again to restart music
6. Power Display: Displays the level of charge in the battery
7. Music Button: Press button to start the music
8. Bluetooth Speaker: Press button, connect mobile phone, then the car can play music and perform calling functions from the phone.
9. FM Button: Switch between Storytelling, music, and radio
10. MP3 Slot
11. No Use
12. Light Button: turn lights on and off
13. Charging Socket: Plug charger in to charge the vehicle
14. Micro SD card slot
15. Shift Switch: Change the direction of the vehicle, forward-backward
16. Pedal: Press to make the car move.

WARNING:

- Use only the rechargeable battery and charger supplied with your vehicle. **NEVER** substitute the battery or charger with another brand. Using another battery or charger may cause damage.
- **NEVER** modify the electric circuit system. Tampering with the electric system may cause permanent damage to the system.
- **Do not** allow direct contact between battery terminals.
- **Do not** allow any type of liquid on the battery or its components.
- Charge the battery in a well-ventilated area **ONLY**. Do not charge near or around flammable materials.
- **NEVER** pick up the battery by the wires or charger. Damage can occur to the battery and may cause a fire. Pick up the battery by the case **ONLY**.
- Charge the battery in a dry area **ONLY**.

Wash hands after handling.

- **Do not** open the battery. Battery contains lead acid and other materials that are toxic and corrosive.
- **Do not** open the charger. Exposed wiring and circuitry inside case could cause electric shock. **NEVER** allow a child to handle or charge the battery. Battery is heavy and contains lead acid (electrolyte).
- **Do not** drop the battery. Permanent damage to the battery could occur or cause serious injury.
- Before charging the battery, check for wear or damage to the battery, charger, its supply cord and the connectors. **DO NOT** charge the battery if any damage to parts has occurred.
- **Do not** allow the battery to drain completely. Recharge the battery after each use or once per month if not used regularly.
- **Do not** charge the battery upside down.
- **Always** secure the battery with the bracket. Battery can fall out and injure a child if vehicle tips over.
- The **Power Switch** must be turned in the **OFF** position when charging.
- When the car begins to run slowly, recharge the battery.

GENERAL MAINTENANCE:

It is the parent's responsibility to check main parts of the toy before using. Regularly examine the car for potential hazard, such as damage to the battery, charger, cable or cord, and plug. Also, check that all screws are tightened throughout the car. In the event of such damage, the toy must not be used until that damage is repaired or replaced.

- Make sure the plastic parts of the vehicle are not cracked or broken.
- Occasionally use a lightweight oil to lubricate moving parts such as wheels.
- Park the vehicle indoors or cover it with a tarp to protect it from wet weather.
- Keep the vehicle away from sources of heat, such as stoves and heaters. Plastic parts may melt.
- Recharge the battery after each use. Only an adult should handle the battery. Recharge the battery at least once a month when not being used.
- Do not wash the vehicle with a hose. Do not wash the vehicle with soap and water. Do not drive the vehicle in rainy or snowy weather as water will damage the motor, electric system and battery.
- Clean the vehicle with a soft, dry cloth. To restore shine to plastic parts, use a non-wax furniture polish. Do not use car wax. Do not use abrasive cleaners.
- Do not drive the vehicle in loose dirt, sand or fine gravel which could damage moving parts, motors or the electric system.
- For extended times when the car will not be used, the power switch needs to be in the off position and the electrical connections should be disconnected from the battery.

TROUBLE SHOOTING GUIDE:

Problem	Possible Cause	Possible Solutions
Car will not move	<ol style="list-style-type: none"> 1. Battery voltage is low. 2. Battery connector or wires are loose. 3. Battery is damaged or dead. 4. Electrical box or motor is damaged 	Charge the battery Re-connect the battery connector to the car Replace battery Replace motor
The battery will not charge.	<ol style="list-style-type: none"> 1. Battery connector may have come apart or have a bad connection. 2. Battery charger plugged into a bad wall outlet. 3. Battery charger is damaged. 	Re-connect the battery connector to the car electrical connector Try another wall outlet Replace battery charger
Shortened battery life	Battery was not charged fully Battery is old	Charge battery fully Change battery
Some Noise and heat when charging battery	Chemical reaction	Normal
Low Speed	Battery is old Battery is low on charge Weight limit exceeded Uneven or uphill path Vehicle is being used in harsh conditions	Change the battery Charge the battery Do not exceed max weight limit Use on flat surfaces Avoid using car in harsh conditions
Noise coming from motor/gearbox	Gear in motor/gearbox broken	Call for replacement motor
The car shakes when moving	Bad Connection of the motor wires Possible motor failure	Reconnect wires Call for replacement motor
Car needs a push to go forward	Poor contact of wires and/or connectors "Dead Spot" on motor	Check that the battery connectors are firmly plugged into each other. If wires are loose around the motor, contact the distributor's service department A dead spot means the electric power is not being delivered to the terminal connection. Call our service department

Self-Resetting Breaker – The vehicle is equipped with a self-resetting breaker. In the event the power is tripped the breaker will reset itself in approximately one minute.

If you are unable to solve a problem, please feel free to contact us.

Phone: 402-477-0541 or Email: customerservice@rollinghillstrading.com